

LC-NCP

- NC선반에 적합한 라이브센터
 - 절삭유 및 이물질 유입 방지
 - NC TYPE보다 강력한 지지력 및 내구성
 - 3중 베어링 구조로 정밀도가 높고 수명이 길다
 - SHAFT 열처리 경도 HRC58~62
 - RUN OUT 0.003
- Live Center for CNC lathe
 - Prevent the inflow of cutting oil and foreign substance
 - Stronger bearing capacity and durability than NC TYPE
 - High degree of accuracy of rotation and high durability by using the triplexed bearing structure as high degree of precision
 - Heat treatment hardness of Shaft : HRC58~62
 - RUN OUT 0.003



NCPB TYPE

바이트 간섭 최소화
Minimize the bite-interference



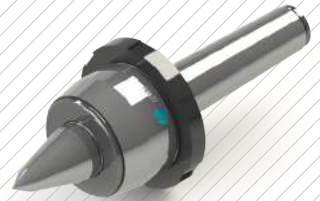
NCPBC TYPE

바이트 간섭 최소화 / 초경타입
Minimize the bite-interference / Carbide Type



NCPBN TYPE

바이트 간섭 최소화 / 너트타입
Minimize the bite-interference / Nut Type



NCPBCN TYPE

바이트 간섭 최소화 / 초경, 너트 타입
Minimize the bite-interference / Carbide, Nut Type



NNPC TYPE

초경타입
Carbide Type



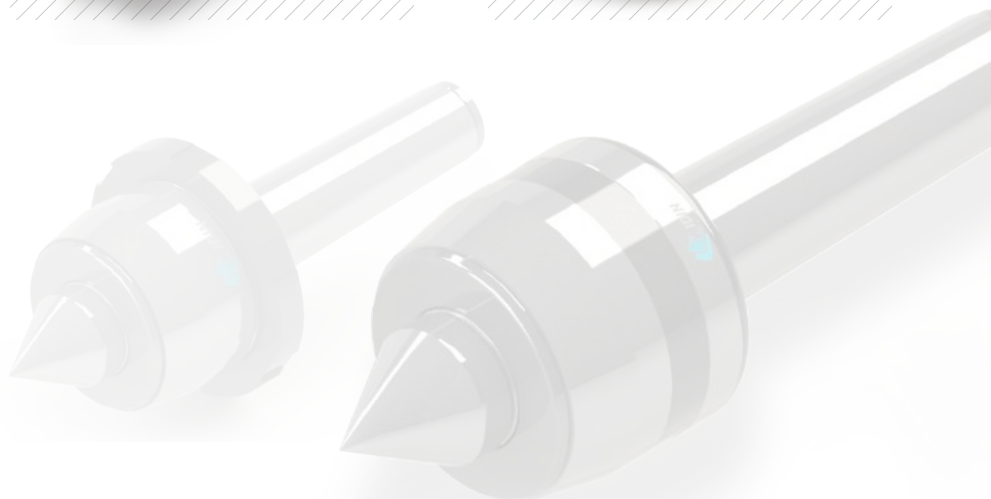
NCPN TYPE

너트타입
Nut Type

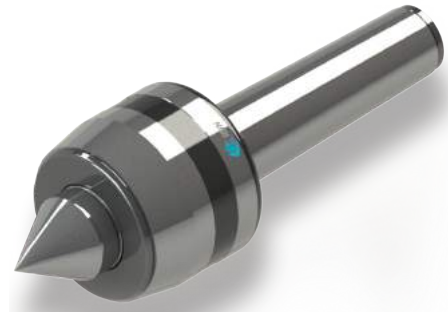
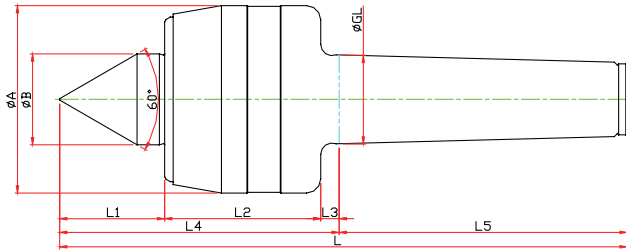


NNPCN TYPE

초경, 너트타입
Carbide, Nut Type



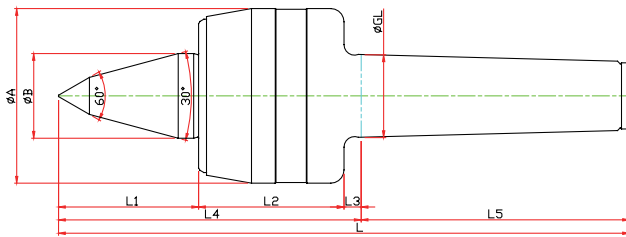
NCP-TYPE



Model	Order Number	Morse Taper	Dimension									Weight MAX.	R.P.M MAX.	Run Out
			GL	A	B	L1	L2	L3	L4	L5	L			
LC-3NCP	030003	NO.3	23.825	50	22	27	45	5	77	81	158	800	4800	0.003
LC-4NCP	030004	NO.4	31.267	66	32	37	55	6.5	98.5	101.5	200	1300	3800	0.003
LC-5NCP	030005	NO.5	44.399	82	40	45	65	6.5	116.5	129.5	246	1900	3400	0.005
LC-6NCP	030006	NO.6	63.384	100	45	65	80	8	153	182	335	2500	3000	0.005

NCPB-TYPE

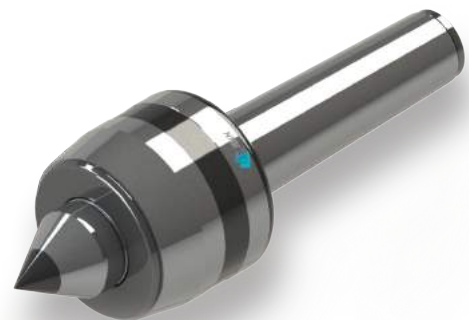
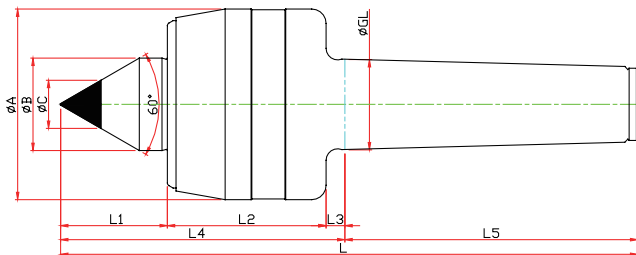
※ SHAFT 확장(바이트 간섭 최소화) SHAFT EXTENTION(Minimize the bite-interference)



Model	Order Number	Morse Taper	Dimension										Weight MAX.	R.P.M MAX.	Run Out
			GL	A	B	b	L1	L2	L3	L4	L5	L			
LC-3NCPB	031003	NO.3	23.825	50	22	10	27	45	5	97	81	178	410	4800	0.003
LC-4NCPB	031004	NO.4	31.267	66	32	14	37	55	6.5	114.5	101.5	216	710	3800	0.003
LC-5NCPB	031005	NO.5	44.399	82	40	16	45	65	6.5	136.5	129.5	266	1000	3400	0.005
LC-6NCPB	031006	NO.6	63.384	100	45	18	65	80	8	166	182	348	1400	3000	0.005

NCPC-TYPE

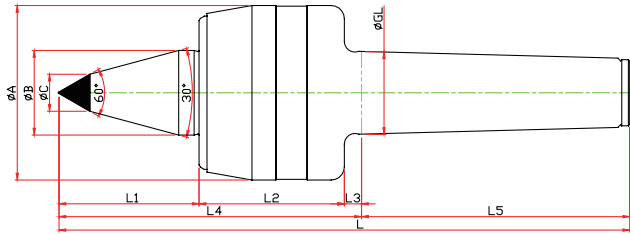
※ 초경타입 Carbide Type



Model	Order Number	Morse Taper	Dimension										Weight MAX.	R.P.M MAX.	Run Out
			GL	A	B	L1	L2	L3	L4	L5	C	L			
LC-3NCPC	030103	NO.3	23.825	50	22	27	45	5	77	81	10	158	800	4800	0.003
LC-4NCPC	030104	NO.4	31.267	66	32	37	55	6.5	98.5	101.5	14	200	1300	3800	0.003
LC-5NCPC	030105	NO.5	44.399	82	40	45	65	6.5	116.5	129.5	18	246	1900	3400	0.005
LC-6NCPC	030106	NO.6	63.384	100	45	65	80	8	153	182	25	335	2500	3000	0.005

NCPBC-TYPE

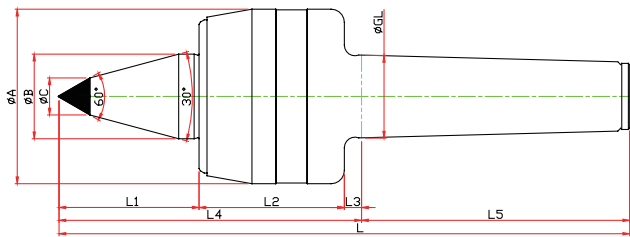
- ※ SHAFT 확장(바이트 간섭 최소화) SHAFT EXTENTION(Minimize the bite-interference)
- ※ 초경타입 Carbide Type



Model	Order Number	Morse Taper	Dimension										Weight MAX.	R.P.M MAX.	Run Out
			GL	A	B	C	L1	L2	L3	L4	L5	L			
LC-3NCPBC	031103	NO.3	23,825	50	22	10	27	45	5	97	81	178	410	4800	0.003
LC-4NCPBC	031104	NO.4	31,267	66	32	14	37	55	6.5	114.5	101.5	216	710	3800	0.003
LC-5NCPBC	031105	NO.5	44,399	82	40	16	45	65	6.5	136.5	129.5	266	1000	3400	0.005
LC-6NCPBC	031106	NO.6	63,384	100	45	18	65	80	8	166	182	348	1400	3000	0.005

NCPN-TYPE

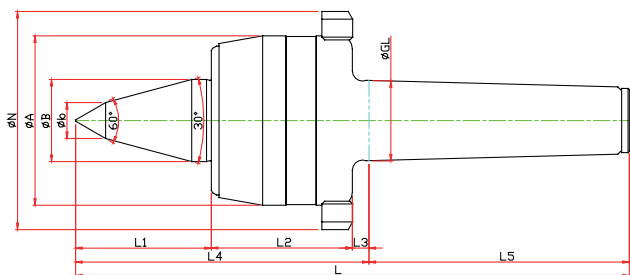
- ※ 너트타입 Nut Type



Model	Order Number	Morse Taper	Dimension										Weight MAX.	R.P.M MAX.	Run Out
			GL	A	B	L1	L2	L3	L4	L5	N	L			
LC-3NCPN	030013	NO.3	23,825	50	22	27	45	5	77	81	70	158	800	4800	0.003
LC-4NCPN	030014	NO.4	31,267	66	32	37	55	6.5	98.5	101.5	85	200	1300	3800	0.003
LC-5NCPN	030015	NO.5	44,399	82	40	45	65	6.5	116.5	129.5	105	246	1900	3400	0.005
LC-6NCPN	030016	NO.6	63,384	100	45	65	80	8	153	182	130	335	2500	3000	0.005

NCPBN-TYPE

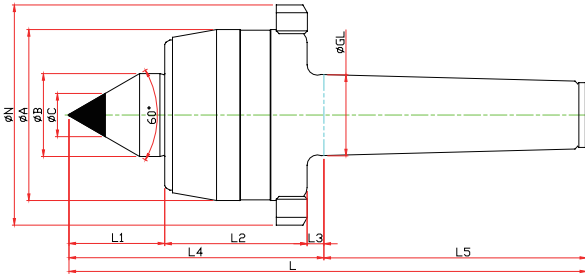
- ※ SHAFT 확장(바이트 간섭 최소화) SHAFT EXTENTION(Minimize the bite-interference)
- ※ 너트타입 Nut Type



Model	Order Number	Morse Taper	Dimension										Weight MAX.	R.P.M MAX.	Run Out	
			GL	A	B	b	L1	L2	L3	L4	L5	N				L
LC-3NCPBN	031013	NO.3	23,825	50	22	10	47	45	5	97	81	70	178	410	4800	0.003
LC-4NCPBN	031014	NO.4	31,267	66	32	14	53	55	6.5	114.5	101.5	85	216	710	3800	0.003
LC-5NCPBN	031015	NO.5	44,399	82	40	16	65	65	6.5	136.5	129.5	105	266	1000	3400	0.005
LC-6NCPBN	031016	NO.6	63,384	100	45	18	78	80	8	166	182	130	348	1400	3000	0.005

NCPCN-TYPE

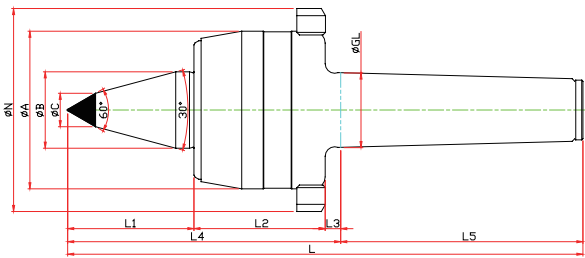
※ 너트, 초경타입 Nut, Carbide Type



Model	Order Number	Morse Taper	Dimension											Weight MAX.	R.P.M MAX.	Run Out
			GL	A	B	L1	L2	L3	L4	L5	C	N	L			
LC-3NCPCN	030113	NO.3	23,825	50	22	27	45	5	77	81	10	70	158	800	4800	0.003
LC-4NCPCN	030114	NO.4	31,267	66	32	37	55	6.5	98.5	101.5	14	85	200	1300	3800	0.003
LC-5NCPCN	030115	NO.5	44,399	82	40	45	65	6.5	116.5	129.5	18	105	246	1900	3400	0.005
LC-6NCPCN	030116	NO.6	63,384	100	45	65	80	8	153	182	25	130	335	2500	3000	0.005

NCPBCN-TYPE

※ SHAFT 확장(바이트 간섭 최소화) SHAFT EXTENSION(Minimize the bite-interference)
 ※ 너트, 초경타입 Nut, Carbide Type



Model	Order Number	Morse Taper	Dimension											Weight MAX.	R.P.M MAX.	Run Out
			GL	A	B	L1	L2	L3	L4	L5	C	N	L			
LC-3NCPBCN	031113	NO.3	23,825	50	22	47	45	5	97	81	10	70	178	800	4800	0.003
LC-4NCPBCN	031114	NO.4	31,267	66	32	53	55	6.5	114.5	101.5	14	85	216	1300	3800	0.003
LC-5NCPBCN	031115	NO.5	44,399	82	40	65	65	6.5	136.5	129.5	16	105	266	1900	3400	0.005
LC-6NCPBCN	031116	NO.6	63,384	100	45	78	80	8	166	182	25	130	348	2500	3000	0.005

NCP SPECIAL

※ 사용자의 조건에 따라 주문, 제작 Customized-special production for user's condition



NC-TYPE
 NCP-TYPE
 NK-NKD TYPE
 GR-SM TYPE
 SMP-TYPE
 D50 TYPE
 HD-TYPE
 PT-TYPE
 LM CENTER
 LM-H CENTER